

## HOUSING I: VIENNA & FRANKFURT

### THE PROBLEM:

Meyer's Hof *Mietskaserne* (=Rental Barracks), Berlin, 1875-1930.

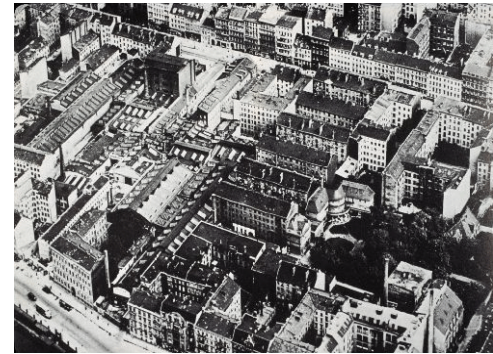
### AUSTRIA:

"Red Vienna": Ringstrasse des Proletariats

(Housing by Ehn, Gessner, Loos, Behrens, Tessenow, etc)

Ernst Reumann Hof, H. Gessner, Vienna, 1926

\* Karl Marx Hof, K. Ehn, Vienna, 1927 (1382 apts.)



### THE TECHNICAL DEBATES:

City Center or Periphery

Low Rise vs. High Rise

Detached vs. Row Housing vs. Apartment Blocks

Perimeter Blocks vs. Zeilenbau (=Linear building)



### GERMANY

"Das Neue Frankfurt" =The New Frankfurt

Siedlungen: Bruchfeldstraße, E. May, 1926-7 (643 apts., zig-zag, perimeter block)

\* Roemerstadt, Ernst May, 1927-8 (1220 apts., curves)

Praunheim, E. May, 1926-8 (1441 apts., with trolley tracks, Phase 3)

Am Lindenbaum, W. Gropius, 1930 (1532 apts., Zeilenbau)

Siedlung Goldstein, May, 1930 (Co-sponsored with German Garden City Assoc.)

\* Frankfurt Kitchen, Grete Schute-Lihotsky

Das neue Frankfurt magazine

Construction site efficiency, pre-fabricated concrete panels

CIAM II Meeting: "Existence Minimum Apartments", 1929

